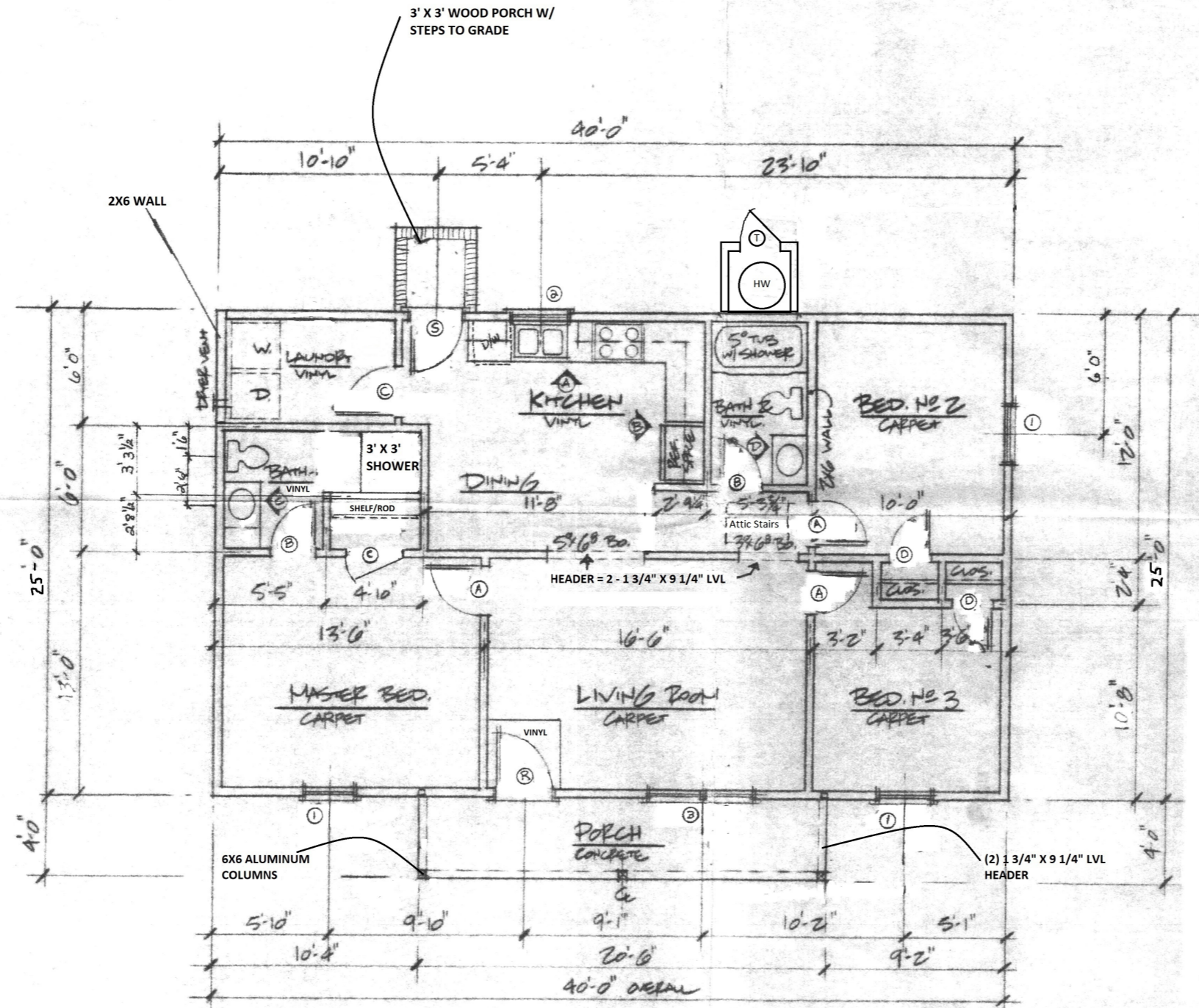


* NOTE: CONSTRUCTION PER 2018 IRC



FLOOR PLAN

| Window Schedule | | |
|-----------------|----------|------------------------------|
| Code | Quantity | Description |
| 1 | 3 | 3'0"-5'0" Single Hung Window |
| 2 | 1 | 2'8"-3'0" Single Hung Window |
| 3 | 1 | 3'0"-5'0" Twin Window |

| Interior Door Schedule | | |
|------------------------|----------|----------------------------------|
| Code | Quantity | Description |
| A | 3 | 2'6"-6'8" Six panel, hollow core |
| B | 2 | 2'4"-6'8" Six panel hollow core |
| C | 1 | 2'8"-6'8" Six panel hollow core |
| D | 3 | 2'0"-6'8" Six panel hollow core |

| Exterior Door Schedule | | |
|------------------------|----------|---|
| Code | Quantity | Description |
| R | 1 | 3'0"-6'8" Insulated, metal door with fan lite |
| S | 1 | 2'6"-6'8" Insulated, metal door with 9 lite |
| T | 1 | 2'6"-6'8" Insulated, Metal door, six panel |

"THE BENJAMIN"

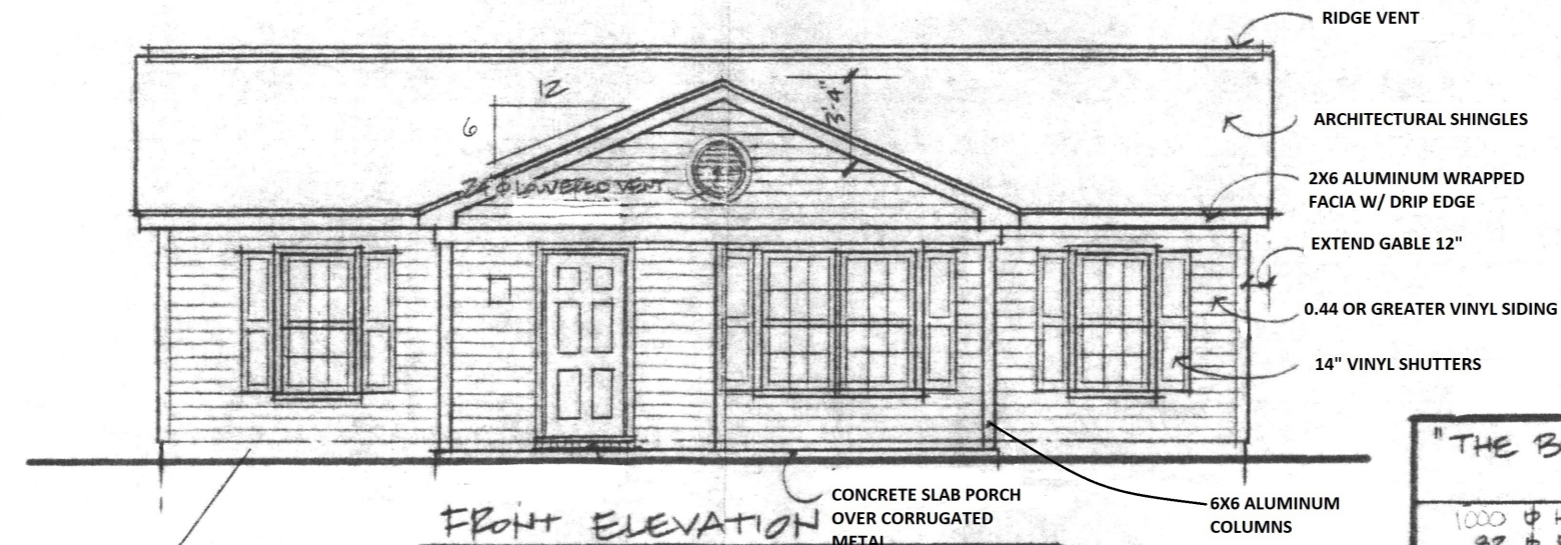
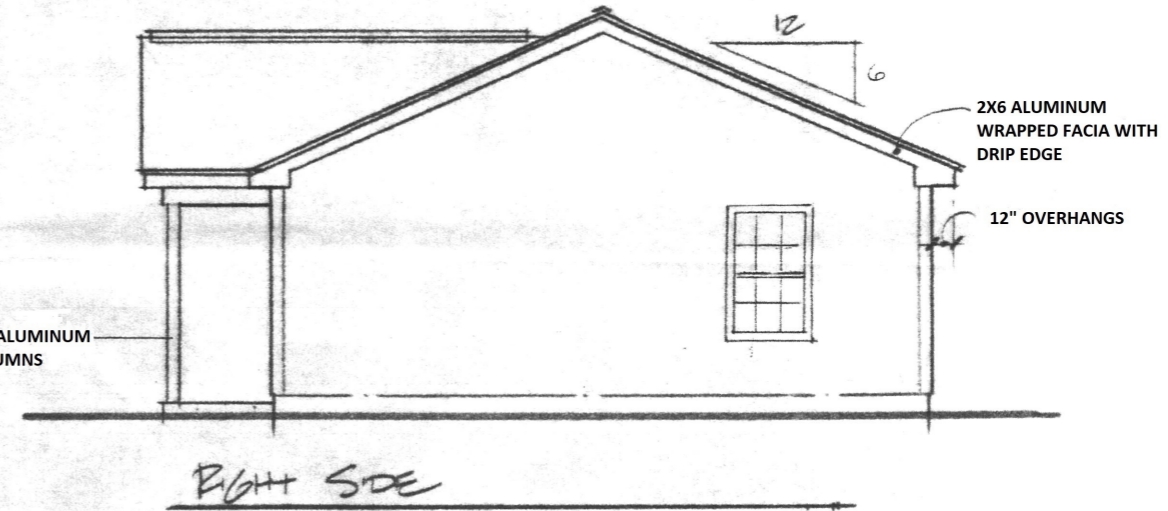
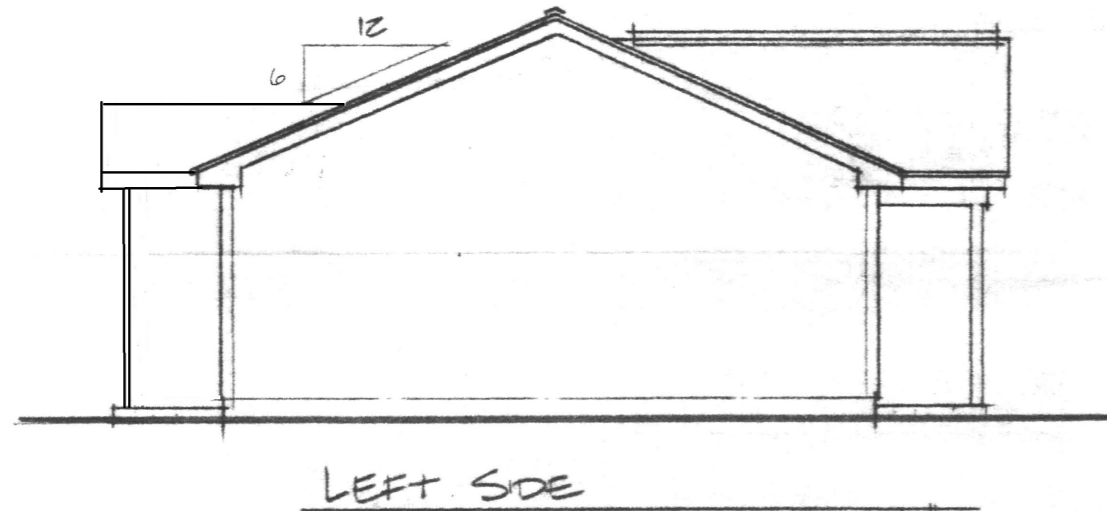
1000 ϕ HEATED
32 ϕ PORCH



ATTIC VENTILATION:
AREA - 1000SF = RATIO 1/150

RIDGE BENT NET FREE
VENTILATION = $4/LF = 0.86$

38LF OF RIDGE VENT = 32.86 SF
OF NET VENTILATION = RATIO
OF 1/31



| | |
|--------------------|--|
| "THE BENJAMIN" | |
| 1000 ϕ HEATED | |
| 32 ϕ PORCH | |

BENJAMIN

CRAWL W/UTILITY ROOM